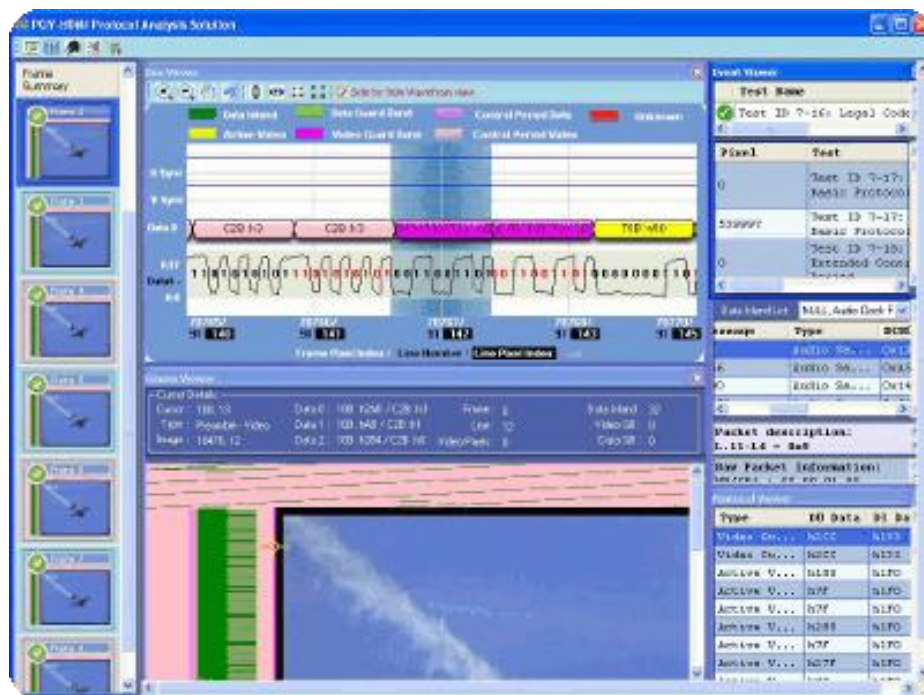


# MHL/HDMI Protocol Analysis Software

## TEK-PGY-MHL/HDMI-PA Data Sheet



### Features

- Industry's first MHL/HDMI Protocol analysis software offers in-depth visibility from physical layer to video frames with unmatched data correlation between all the layers of MHL/HDMI protocol.
- Transforms the general purpose oscilloscope into sophisticated MHL/HDMI Protocol Analyzer.
- Debugging and troubleshooting made easy by cross-correlating the MHL/HDMI protocol data using frame summary viewer, frame viewer, Bus viewer, data packet and event viewers.
- Frame summary view helps to quickly locate error frames for detailed analysis.
- The Frame Viewer helps to view the transmitted frame with color coded MHL/HDMI operating modes as per the specification and eliminates the need of a Sink device in MHL/HDMI test setup by reproducing transmitted image in Oscilloscope display.
- Bus viewer with the Physical layer analog waveforms offers unmatched flexibility in correlating protocol errors with physical layer.
- The Protocol Viewer displays the tabular view of protocol information with decoded values.
- The Event Viewer lists detailed protocol errors and events in the MHL/HDMI compliance tests to quickly locate the protocol failures.
- Raw and detailed packet information in the Data packet viewer helps to identify the problems in Data Island periods.
- Supports 24, 30, 36, and 48 bits per video pixel for HDMI and 24 bits per pixel for MHL.
- Oscilloscope setup assistant automatically sets up the oscilloscope to obtain accurate and reliable test results.
- Performs the protocol Tests as per the MHL Compliance Test specification 2.0, HDMI Compliance Test specification 1.4a and displays quick Pass/Fail results.
- Conforms to HDMI Specification 1.4a and MHL Specification 2.0.
- Supports Oscilloscope live channels, Tektronix .wfm waveform files and .bin (P/A/V file format of HDMI Capture card) files
- Generates comprehensive and customizable reports.
- Ability to export the analyzed data to .bmp, txt, csv, .bin (P/A/V File format) for advanced analysis.

# MHL/HDMI Protocol Analysis Software

## TEK-PGY-MHL/HDMI-PA Data Sheet

The industry's first Oscilloscope based TEK-PGY-MHL/HDMI Protocol Analysis software lets you see every event in the MHL/HDMI stream from MHL/HDMI frame to physical layer analog signals which conventional protocol analyzer can not show.

TEK-PGY-MHL/HDMI Protocol Analyzer software performs the MHL/HDMI protocol compliance tests as per MHL CTS 2.0 and HDMI CTS 1.4a. It provides unmatched flexibility in analyzing, debugging, and correlating the test results from MHL/HDMI Frame to physical layer analog waveforms to address the MHL/HDMI design challenges.

For efficient debugging, TEK-PGY-MHL/HDMI software provides unique multi viewer which comprises of frame summary viewer, frame viewer, bus viewer, Protocol viewer, Data Island viewer and Event and test results viewer. Automatic cross-linking between all these viewers enables you to see and correlate the data in different parts of the MHL/HDMI protocol stack

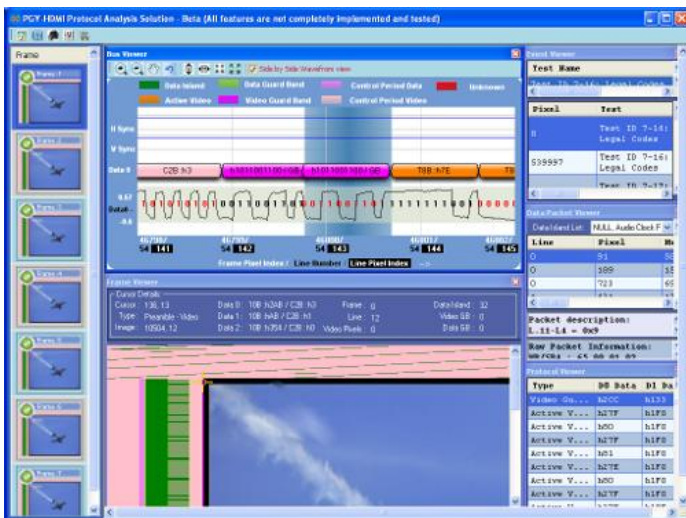


Figure 1: Multi viewer

TEK-PGY-MHL/HDMI protocol analysis software along with Tektronix physical layer compliance test solutions and Industry leading Tektronix high performance oscilloscope offers a single box solution for physical and protocol layer testing.

## Comprehensive MHL/HDMI Protocol Analysis

For efficient debugging and troubleshooting the MHL/HDMI protocol, TEK-PGY-MHL/HDMI Protocol analysis software offers Frame summary viewer, Frame viewer, Bus viewer, Protocol viewer, Data packet viewer and Event and test results viewers.

**Frame summary viewer** provides each frame's thumbnail image with summary of pass/fail test results of the corresponding frame. Frame summary viewer enables to quickly navigate to the failure frames for detailed analysis.

**Frame Viewer** shows the transmitted complete frame image as per the MHL/HDMI Specification. For easy identification of the operating modes, the Control period, preamble video, preamble data, data guard band, data island and video guard band, active video are shown with the different colours. Hovering over the image using mouse provides the respective operating mode's type, relative pixel information, transmitted 10bit data value and corresponding decoded information for the respective operating mode. Frame viewer eliminates the need for a MHL/HDMI sync device for viewing the image transmitted by the source.

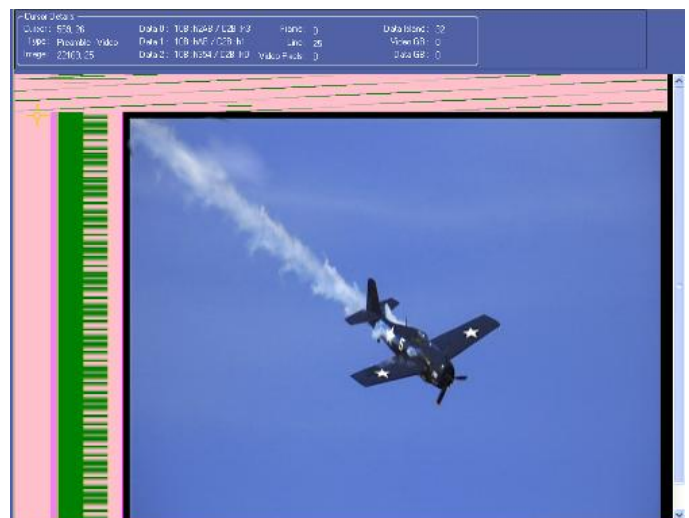


Figure 3: Frame viewer

# MHL/HDMI Protocol Analysis Software

## TEK-PGY-MHL/HDMI-PA Data Sheet

**Bus Viewer** provides a way to visually inspect the transmitted MHL/HDMI information in Bus Diagram display along with the analog waveforms.

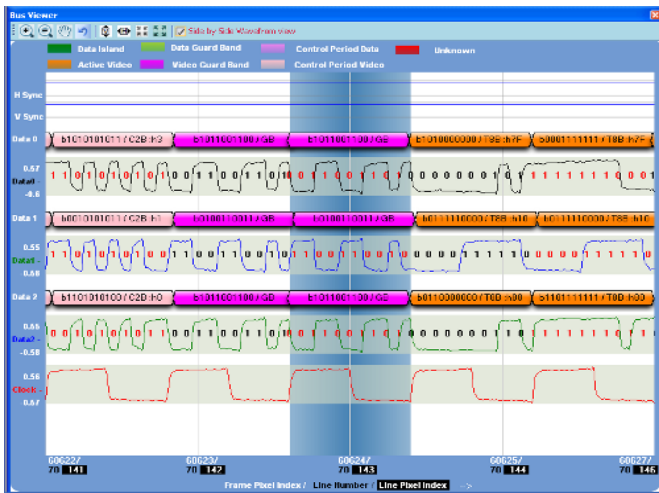


Figure 4: HDMI Bus viewer with Physical layer waveforms

The industry's first MHL/HDMI bus diagram and analog waveform with overlapped protocol data helps to identify the inter pair data skew, clock to data skew related problems. Each line is colour coded for Control period, preamble video, preamble data, data guard band, data island and video guard band, active video for easy error deduction. Apart from the bus information, the HDMI bus viewer also provides information about the H-Sync, V Sync active periods.



Figure 5: MHL Bus viewer with Physical layer waveforms

MHL bus viewer allows viewing the Data Positive and Data Negative waveforms and the corresponding common mode clock and data which are created using the captured MHL signals. MHL bus diagram also provides the transmitted multiplexed logical channel

details as it is along with the de-multiplexed logical channels as per the MHL Protocol Specification.

For identifying and locating the errors in a specific period bus viewer provides pixel index in the selected frame, line number and pixel index with in the line.

Utility functions such as zoom, un-zoom, pan, undo, fit horizontal, fit vertical, fit horizontal and vertical and side by side waveform and bus view helps to manoeuvre the bus diagram and analyze the MHL/HDMI protocol

The **Protocol Viewer** provides the table view of protocol listing with transmitted 10 bit data for each channel along with the decoded 8bit for active video, 4 bit TERC4 data for Data Island and 2 bit for Control period encoding along with the time stamp.

Type	D0 Data	D1 Data	D2 Data	R Data	G Data	B Data	Time
Control Period Video	h354	hAB	h354	C2B :h0	C2B :h1	C2B :h0	13.968 mS
Control Period Video	h354	hAB	h354	C2B :h0	C2B :h1	C2B :h0	13.968 mS
Control Period Video	h354	hAB	h354	C2B :h0	C2B :h1	C2B :h0	13.968 mS
Control Period Video	h354	hAB	h354	C2B :h0	C2B :h1	C2B :h0	13.968 mS
Control Period Video	h354	hAB	h354	C2B :h0	C2B :h1	C2B :h0	13.968 mS
Control Period Video	h354	hAB	h354	C2B :h0	C2B :h1	C2B :h0	13.968 mS
Control Period Video	h354	hAB	h354	C2B :h0	C2B :h1	C2B :h0	13.968 mS
Control Period Video	h354	hAB	h354	C2B :h0	C2B :h1	C2B :h0	13.968 mS
Control Period Video	h354	hAB	h354	C2B :h0	C2B :h1	C2B :h0	13.968 mS
Control Period Video	h354	hAB	h354	C2B :h0	C2B :h1	C2B :h0	13.968 mS
Video Guard Band	h2CC	h133	h2CC	GB	GB	GB	13.968 mS
Video Guard Band	h2CC	h133	h2CC	GB	GB	GB	13.968 mS
Active Video	h1F0	h1F0	h1F0	T8B :h10	T8B :h10	T8B :h10	13.968 mS
Active Video	h10F	h10F	h10F	T8B :h11	T8B :h11	T8B :h11	13.968 mS
Active Video	h10E	h3F1	h10E	T8B :h12	T8B :h12	T8B :h12	13.968 mS
Active Video	h1F1	h30E	h30E	T8B :h13	T8B :h13	T8B :h13	13.968 mS
Active Video	h30E	h30E	h30E	T8B :h13	T8B :h13	T8B :h13	13.968 mS
Active Video	h10C	h30E	h30E	T8B :h13	T8B :h13	T8B :h13	13.968 mS
Active Video	h1F3	h30C	h30C	T8B :h15	T8B :h15	T8B :h15	13.968 mS
Active Video	h1F2	h30D	h30D	T8B :h16	T8B :h16	T8B :h16	13.968 mS
Active Video	h10D	h10D	h3F2	T8B :h17	T8B :h17	T8B :h17	13.968 mS
Active Video	h108	h3F7	h108	T8B :h18	T8B :h18	T8B :h18	13.968 mS
Active Video	h1F7	h308	h1F7	T8B :h19	T8B :h19	T8B :h19	13.968 mS
Active Video	h308	h308	h1F7	T8B :h19	T8B :h19	T8B :h19	13.968 mS
Active Video	h309	h309	h1F6	T8B :h1A	T8B :h1A	T8B :h1A	13.968 mS
Active Video	h109	h109	h3F6	T8B :h1B	T8B :h1B	T8B :h1B	13.968 mS
Active Video	h30B	h30B	h30B	T8B :h1C	T8B :h1C	T8B :h1C	13.968 mS
Active Video	h10B	h10B	h3F4	T8B :h1D	T8B :h1D	T8B :h1D	13.968 mS
Active Video	hA0	h25F	h25F	T8B :h1E	T8B :h1E	T8B :h1E	13.968 mS

Figure 6: Protocol viewer

**Data Packet Viewer** lists the entire data packets transmitted in the selected frame. Each data island period type, line number, the pixel number, data island period's BCH data are displayed in the tabular format. Depending on the packet type the data packet viewer also provides the details of the data packet as per the CEA 861 specification.



# MHL/HDMI Protocol Analysis Software

## TEK-PGY-MHL/HDMI-PA Data Sheet

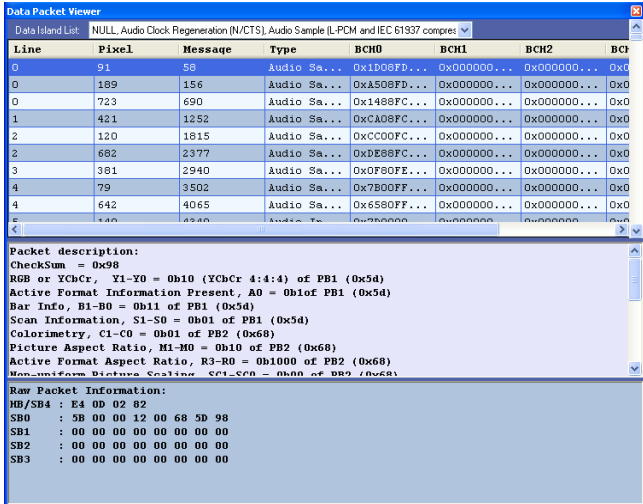


Figure 7: Data Packet viewer

Oscilloscope automatically for reliable and accurate test results.

Software offers the flexibility of capturing 2sec video frames as per MHL/HDMI test procedure or few frames for quick debugging purpose.

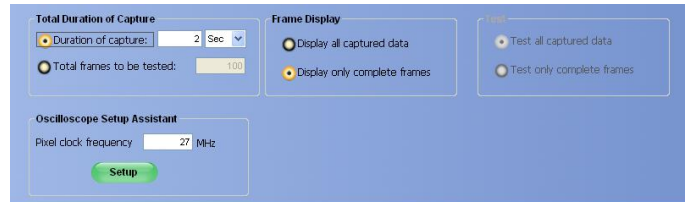


Figure 9: Capture settings

**MHL/HDMI Protocol compliance testing** MHL/HDMI Protocol Software makes comprehensive test as per HDMI Compliance Test Specification 1.4a and MHL Compliance test specification 2.0

**Event and Test results viewer** list the selected tests results along with the description of each test pass/ fail information.

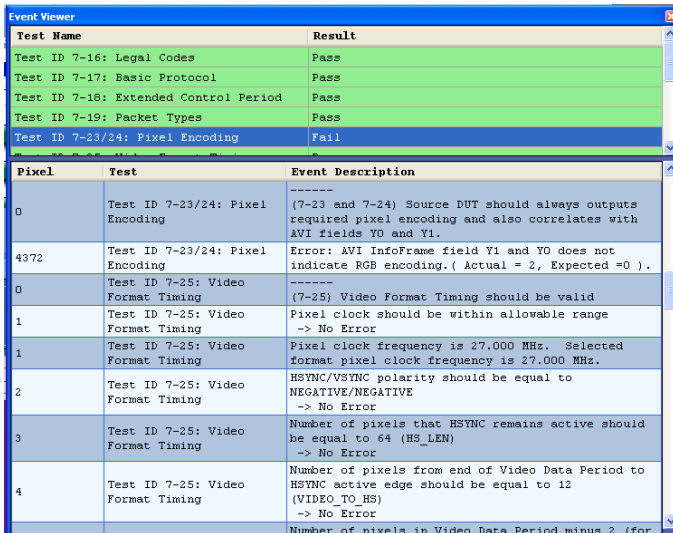


Figure 8: Event and Test results viewer

### Automated customizable Report and Export

MHL/HDMI software's in-built automated report generator offers a customizable report generation capability helps to communicate the test reports effectively between the fellow team members and management.

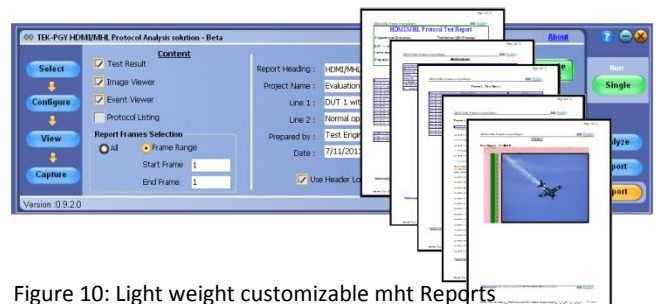


Figure 10: Light weight customizable mht Reports

To further analyze the data, the software also provides image, protocol and data island period data in multiple export formats. The P/A/V Binary format helps to cross correlate the TEK-PGY-MHL/HDMI data with the conventional protocol analyzer software.

### Applications

Analyzing and Debugging HDMI and MHL protocol in:

- Mobile smart phones / PDAs
- Digital home appliances
- Portable Video Players
- Netbooks
- Gaming machines

### Seamless oscilloscope integration

TEK\_PGY-MHL/HDMI-PA software runs inside the Tektronix high performance windows oscilloscope. The oscilloscope setup assistant helps to set up the



# MHL/HDMI Protocol Analysis Software

## TEK-PGY-MHL/HDMI-PA Data Sheet

### Characteristics

<b>Select panel</b>	
Modes	HDMI / MHL
Displays	Frame summary viewer
	Frame Viewer
	Bus Viewer
	Protocol Viewer
	Data Packet Viewer
	Event and Test results viewer
<b>HDMI Protocol Tests (As per CTS 1.4a)</b>	
Source Protocol Tests	7-16 Legal Codes
	7-17 Basic Protocol
	7-18 Extended Control Period
	7-19 Packet Types
Source Video	7-23/7-24 Pixel Encoding
	7-25 Video Format Timing
	7-26 Pixel Reception
	7-27 AVI Infoframe
	7-28 IEC 60958/IEC 61937
Source Audio	7-29 ACR
	7-30 Audio Sample Packet Jitter
	7-31 Audio InfoFrame
	7-32 Audio Sample Packet Layout
Interoperability	7-33 Source Interoperability with DVI
Source Advanced features	7-34 Deep Color
	7-35 Gamut Metadata Transmission
	7-36 High Bitrate Audio
	7-37 One Bit Audio
	7-38 3D Video Format Timing
	7-39 4KX2K Video Format Timing
	7-40 Extended Colorimetry Transmission
<b>MHL Protocol Compliance Tests (As per CTS 2.0)</b>	
Source Protocol Tests (Normal and packed pixel Mode)	Legal Codes
	Basic Protocol
	Packet Types
Source Video (Normal and packed pixel Mode)	Pixel Encoding
	Video Format Timing
	Video Quantization test
	AVI Infoframe
Source Audio Tests	Audio Test
	Audio Clock Regeneration Test

3D Video Tests	Audio InfoFrame
	3D Video Timing
	3D Video Mode Indicator
Source	Oscilloscope/ Tektronix .wfm files/ PAV Analyzer .bin file
HDMI Source	Clock, Data0, Data1, and Data2
MHL Source	Data+ and Data- / Common mode clock and Data
Pixel Encoding	RGB/ YCbCr 4:4:4/ YCbCr 4:2:2
Bits per pixel (HDMI)	24/30/36/48
Bits per pixel (HDMI)	24
Format	IEC 861-D/ IEC 861-E/ 3D – Frame Packed/ 3D Side by Side/ 3D Top and Bottom / 4Kx2K
<b>Export</b>	
Export formats	Image ( .BMP / .JPEG/ CSV), Protocol (TXT/ CSV/.BIN), Events (CSV/ TXT)
<b>Report</b>	
Report format	HTML / MHL
<b>DHCP</b>	
DHCP	Not supported

# MHL/HDMI Protocol Analysis Software

## TEK-PGY-MHL/HDMI-PA Data Sheet

### Oscilloscopes Supported

Following Tektronix Oscilloscopes are supported. It is recommended to have option 20XL (Maximum of 250M record length per channel) for protocol compliance testing.

- DPO70000 Series Oscilloscope
- MSO70000 Series Oscilloscope
- DSA70000 Series Oscilloscope

### Ordering Information

#### Option:

**MHL Protocol Analyzer – TEK-PGY-MHL-PA-SW**  
**HDMI Protocol Analyzer - TEK-PGY-HDMI –PA-SW**  
**MHL/HDMI Protocol Analyzer – TEK-PGY-HDMI-MHL**

To order contact the nearest Tektronix Sales office or Prodigy Technovations Pvt Ltd

E- Mail: [Contact@prodigytechno.com](mailto:Contact@prodigytechno.com)

Phone: +91-80-3-255-1030

For more details, visit [www.prodigytechno.com](http://www.prodigytechno.com)

### About Prodigy Technovations Pvt Ltd

Prodigy Technovations Pvt Ltd ([www.prodigytechno.com](http://www.prodigytechno.com)) is a leading global technology provider of Protocol Decode and PHY layer testing solutions on test and measurements equipments. The company's ongoing efforts include successful implementation of innovative and comprehensive protocol decode solutions as well as PHY Layer testing solutions that span the serial data, telecommunications, automotive, and defence electronics sectors worldwide.

### Other products

- I2S Electrical, Audio and Protocol Testing Software.
- I2C Electrical and Protocol Analysis Software.
- FlexRay Protocol and SI Analysis Software.
- USB 2.0 Protocol Decode Software.
- SPI Protocol Analysis Software.
- UART/RS232 Protocol Decode solution.